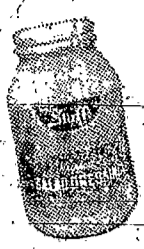




LIMIT 4 CANS,  
PLEASE  
Regularly  
5c can

**STAFF  
TOMATO  
SOUP**  
**4<sup>c</sup>**  
CAN



LIMIT 1 QUART  
JAR, PLEASE  
Regularly  
25c qt.

**STAFF  
SALAD  
DRESSING**  
**9<sup>c</sup>**  
QT.



LIMIT 1 QUART  
JAR, PLEASE  
Regularly  
25c qt.

**STAFF  
MAYON-  
NAISE**  
**19<sup>c</sup>**  
QT.



LIMIT 1 SACK,  
PLEASE  
Regularly  
29c sack

**STAFF  
5 POUND  
FLOUR**  
**19<sup>c</sup>**  
SACK



LIMIT 1  
3-LB. CAN,  
PLEASE  
Reg. 49c can

**STAFF  
SHORT-  
ENING**  
**39<sup>c</sup>**  
CAN

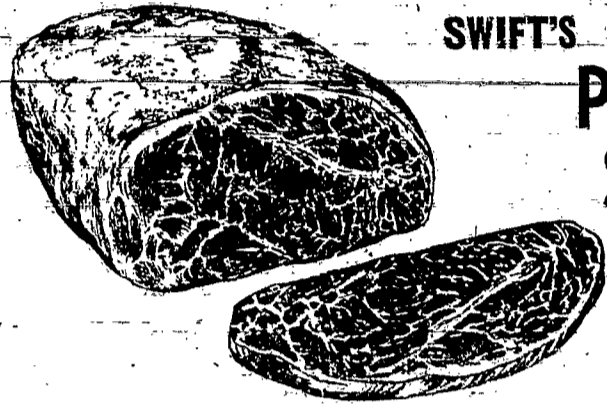
**SAVE U.S. GREEN CURRENCY  
EVERY TIME YOU SHOP**



FROZEN CHICKEN, BEEF  
OR TURKEY

**MORTON  
DINNERS**

**39<sup>c</sup>**  
EACH



SWIFT'S PREMIUM  
**PORK  
STEAKS**  
**59<sup>c</sup>**  
LB.

Swift's Premium  
8 Oz. Sausage  
**BROWN 'N SERVE**  
**55<sup>c</sup>** Pkg.

Swift's Premium  
Pro-Ten Center-Cut  
**CHUCK STEAKS**  
**63<sup>c</sup>** Lb.

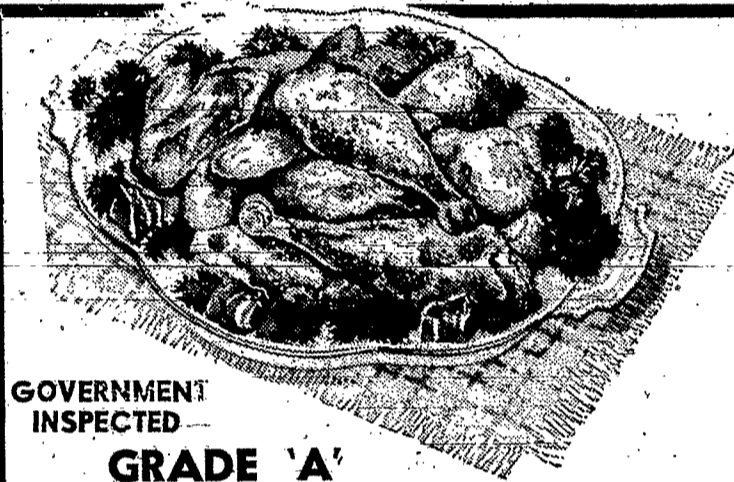
Swift's Premium  
Pro-Ten Arm-cut  
**CHUCK ROASTS**  
**69<sup>c</sup>** Lb.

Swift's Premium  
Pro-Ten Roasts  
**ENGLISH CUT**  
**89<sup>c</sup>** Lb.



NEWARK

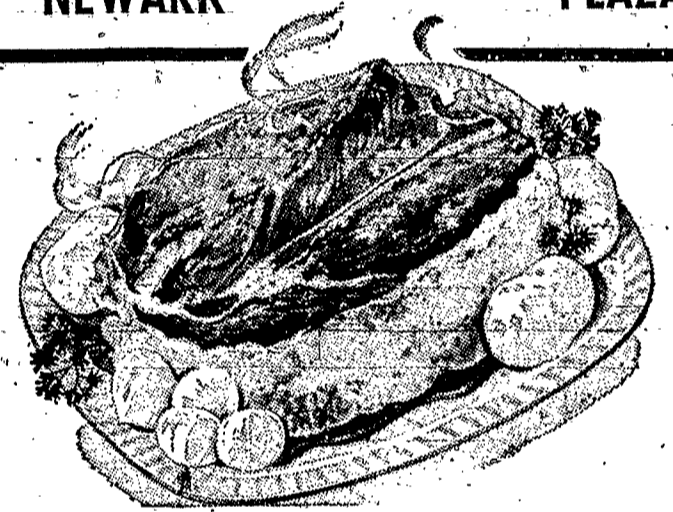
PLAZA



GOVERNMENT  
INSPECTED

**GRADE 'A'  
FRYING CHICKEN LEG  
OR BREAST QUARTERS**

**39<sup>c</sup>**  
LB.



SWIFT'S PREMIUM PRO-TEN  
**CENTER CUT  
CHUCK ROAST**

**49<sup>c</sup>**  
Lb.



Quantities of all items  
limited only when  
necessary

- |                                   |        |     |
|-----------------------------------|--------|-----|
| HUNT'S TOMATO SAUCE, 8 OZ.        | 4 cans | 49¢ |
| TOMATO SAUCE, #300 CANS           | 4 for  | 89¢ |
| TOMATO SAUCE, #2 1/2 CANS         | 2 for  | 79¢ |
| TAMATO S'CE w/ mush'rms or cheese | 4 cans | 59¢ |
| TOMATO PASTE, 6 OZ. CANS          | 4 for  | 59¢ |
| TOMATO PASTE, 12 OZ. CANS         | 3 for  | 89¢ |
| TOMATO PUREE, #2 1/2 CANS         | 2 for  | 69¢ |
| TOMATO CATSUP, 1 1/2 oz. bottles  | 4 for  | 89¢ |
| SOLID PACK TOMATOES, #300 CANS    | 4 for  | 89¢ |
| SALAD TOMATO WEDGES, #300 cans    | 3 for  | 89¢ |

Your favorite checkout girl could become Wegmans

**"CHECKER OF THE YEAR"**

Help us select a winner from the girls  
who help to make sure each shopping  
trip to our stores is a pleasant experi-  
ence for you.

**COME IN  
AND VOTE!**

- |   |  |  |   |   |   |
|---|--|--|---|---|---|
| Limit 1 quart,<br>please<br><b>MIRACLE<br/>WHIP</b><br><b>29<sup>c</sup></b><br>qt. | Limit 1 quart,<br>please<br><b>HELLMANN'S<br/>MAYONNAISE</b><br><b>39<sup>c</sup></b><br>qt. | Limit 1 can,<br>please<br><b>3-LB. CRISCO<br/>SHORTENING</b><br><b>59<sup>c</sup></b><br>can | Limit 1 pound<br>coffee, please<br><b>CHASE &amp;<br/>SANBORN</b><br><b>49<sup>c</sup></b><br>lb. | Limit 1 sack,<br>please<br><b>5 LB. GOLD<br/>MEDAL FLOUR</b><br><b>39<sup>c</sup></b><br>sack | Limit 1 sack,<br>please<br><b>5 LB. DOMINO<br/>SUGAR</b><br><b>39<sup>c</sup></b><br>sack |
|---|--|--|---|---|---|

**SHOP UNTIL  
9 P.M.  
6 NIGHTS  
A WEEK**

Limit 4, please  
**GAMBELL'S  
TOMATO SOUP**  
CAN **8<sup>c</sup>**

33 Varieties  
**BEECH-NUT  
STRAINED FOODS**  
JAR **7<sup>c</sup>**

Reg. 2 pkgs. 98c  
**12 OZ. NESTLE'S  
MORSELS**  
2 Pkgs. **89<sup>c</sup>**

Kraft, reg. 2 for 58c  
**10 OZ. GRAPE  
JELLY**  
2 JARS **39<sup>c</sup>**

Granville Brown's  
**HOME STYLE  
BEANS**  
2 #2 cans **55<sup>c</sup>**

Limit 4, please  
**ALL-COLORS  
SCOT TISSUE**  
ROLL **9<sup>c</sup>**

5 Great Flavors  
**ROYAL PUDDING  
& PIE FILLING**  
3 Pkgs. **25<sup>c</sup>**

Date reg. 3 for \$1.05  
**PINEAPPLE  
JUICE**  
3 46 oz. cans **89<sup>c</sup>**

Wide or Medium  
**MUELLER  
12 OZ. NOODLES**  
2 Pkgs. **55<sup>c</sup>**

U.S. No. 1 Washed  
**MAINE  
POTATOES**  
-lb. bag **75<sup>c</sup>**

**HOME STYLE BREAD**  
REG. PRICE **2** 1 Tb. loaves **39<sup>c</sup>**

**8 oz. PHILADELPHIA  
CREAM CHEESE**  
REGULAR LOW PRICE **29<sup>c</sup>**

**MINUTE MAID**  
12 OZ. CAN FROZEN  
ORANGE JUICE **39<sup>c</sup>**



**Lustre  
Creme**  
HAIR SPRAY

Holds your hair  
without getting  
sticky about it.

Regular  
price  
99c

**WEGMANS  
regular  
price**

**39<sup>c</sup>**

BECAUSE OF THE WINTER OLYMPICS ON TV

**"It's Racing Time"**

WILL RUN THIS WEEK ON  
**SATURDAY AT 10:30 P.M.  
ON WOKR-TV, CHANNEL 13**

Winning horses posted all next week  
in all Wegmans Super Markets